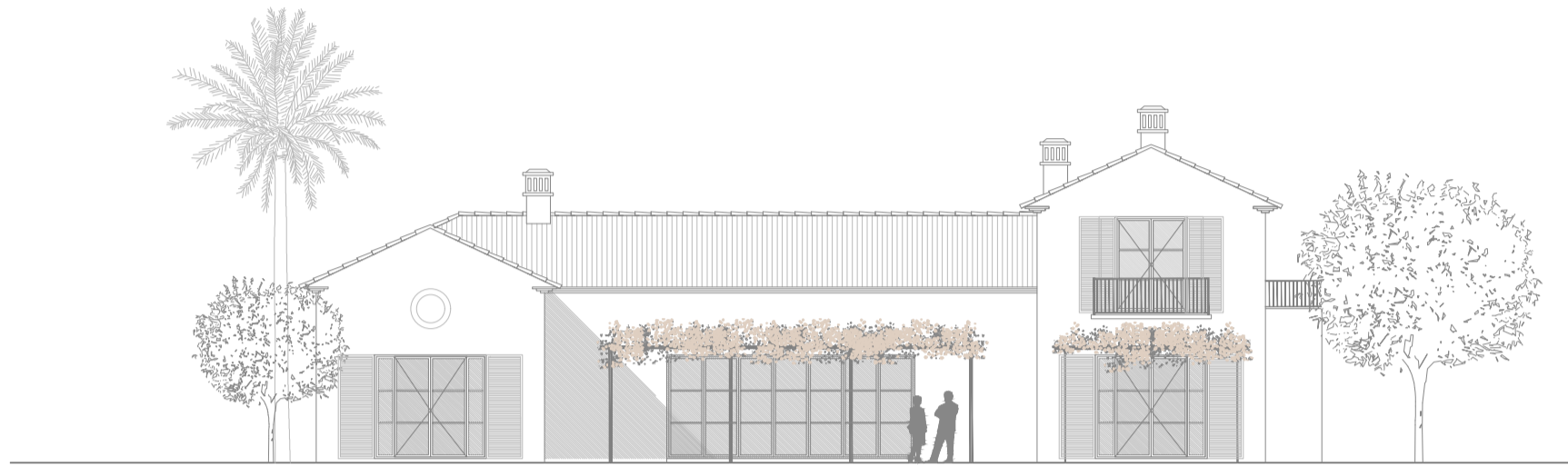


# LA LOMA DE CORTESIN



## CORTIJO 2 PLANTA BAJA

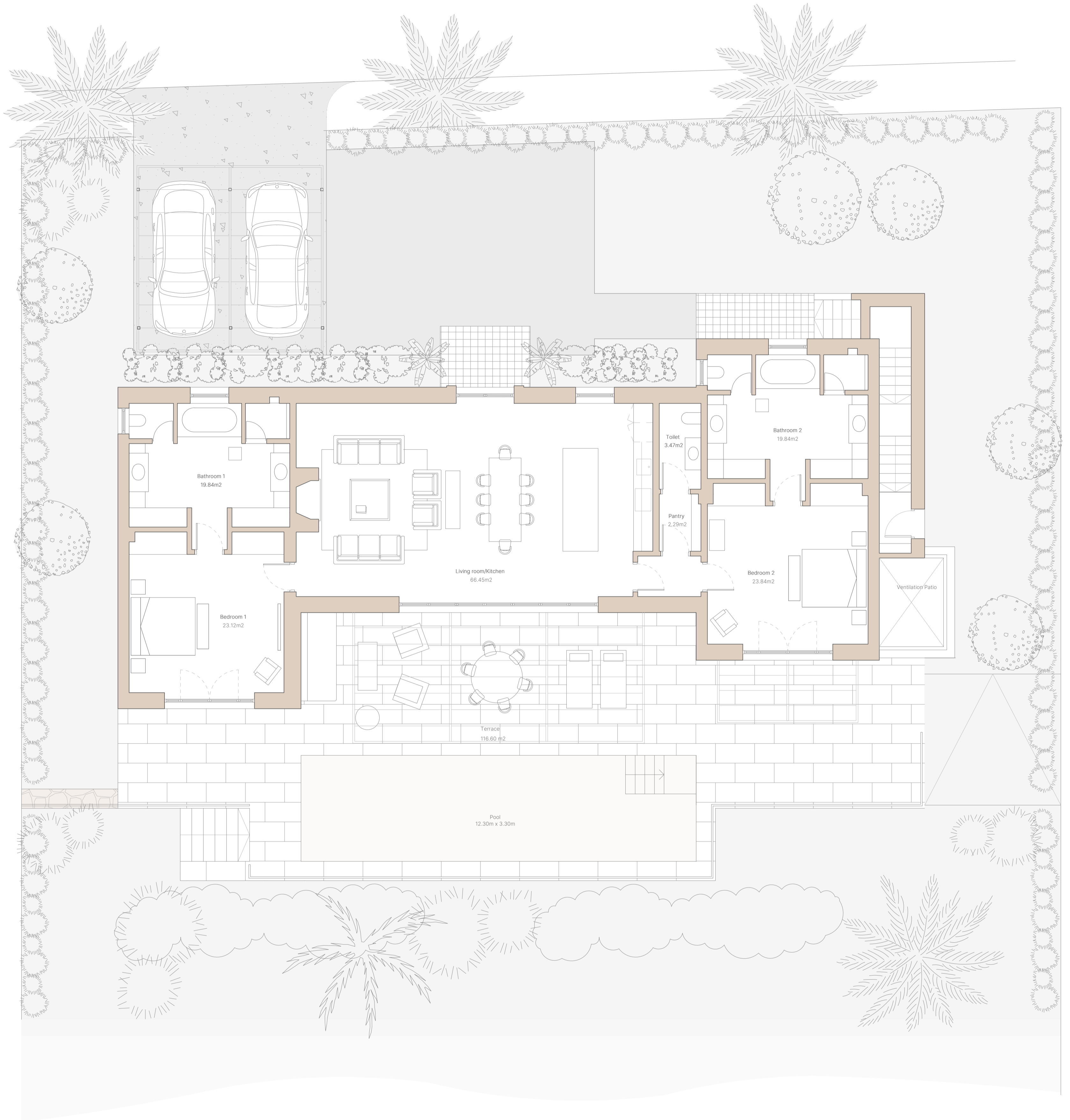
3 DORMITORIOS - 3,5 BAÑOS

SUP. PLANTA ALTA:	57.00 m <sup>2</sup>
SUP. PLANTA BAJA:	206.50 m <sup>2</sup>
SUP. PLANTA SÓTANO:	78.50 m <sup>2</sup>
<b>TOTAL SUP. VIVIENDA:</b>	<b>342.00 m<sup>2</sup></b>
SUP. TERRAZA	116.60 m <sup>2</sup>
SUP. PISCINA + JARDIN	548.82 - 1,036.43 m <sup>2</sup>
SUPERFICIE PARCELA	871.93 - 1,359.54 m <sup>2</sup>

## CORTIJO 2 GROUND FLOOR

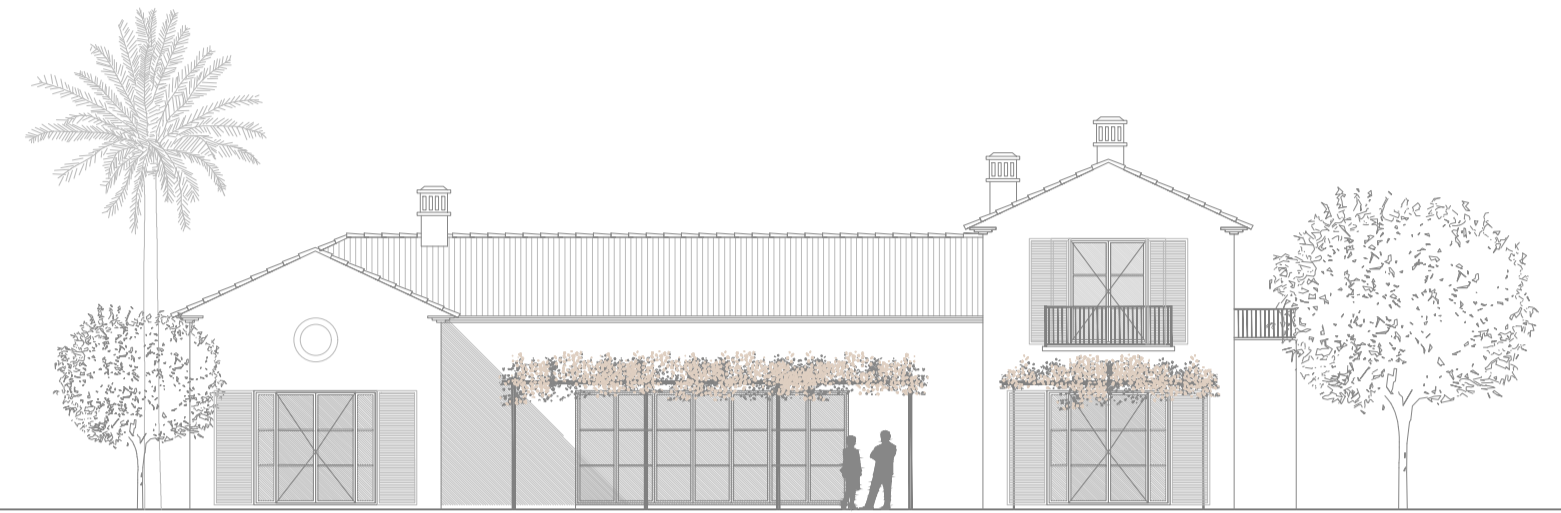
3 BEDROOMS - 3,5 BATHROOMS

FIRST FLOOR AREA	57.00 m <sup>2</sup>
GROUND FLOOR AREA	206.50 m <sup>2</sup>
BASEMENT FLOOR AREA	78.50 m <sup>2</sup>
<b>TOTAL AREA</b>	<b>342.00 m<sup>2</sup></b>
TERRACE	116.60 m <sup>2</sup>
POOL + GARDEN AREA:	548.82 - 1,036.43 m <sup>2</sup>
PLOT AREA	871.93 - 1,359.54 m <sup>2</sup>



PROYECTO SINGLE HOME  
TORRAS Y SIERRA ARQUITECTOS

# LA LOMA DE CORTESIN



## CORTIJO 2 PLANTA ALTA Y SÓTANO

3 DORMITORIOS - 3,5 BAÑOS

SUP. PLANTA ALTA:	57.00 m <sup>2</sup>
SUP. PLANTA BAJA:	206.50 m <sup>2</sup>
SUP. PLANTA SÓTANO:	78.50 m <sup>2</sup>
<b>TOTAL SUP. VIVIENDA:</b>	<b>342.00 m<sup>2</sup></b>
SUP. TERRAZA	116.60 m <sup>2</sup>
SUP. PISCINA + JARDIN	548.82 - 1,036.43 m <sup>2</sup>
SUPERFICIE PARCELA	871.93 - 1,359.54 m <sup>2</sup>

2 PLAZAS DE APARCAMIENTO Y TRASTERO

## FIRST FLOOR AND BASEMENT

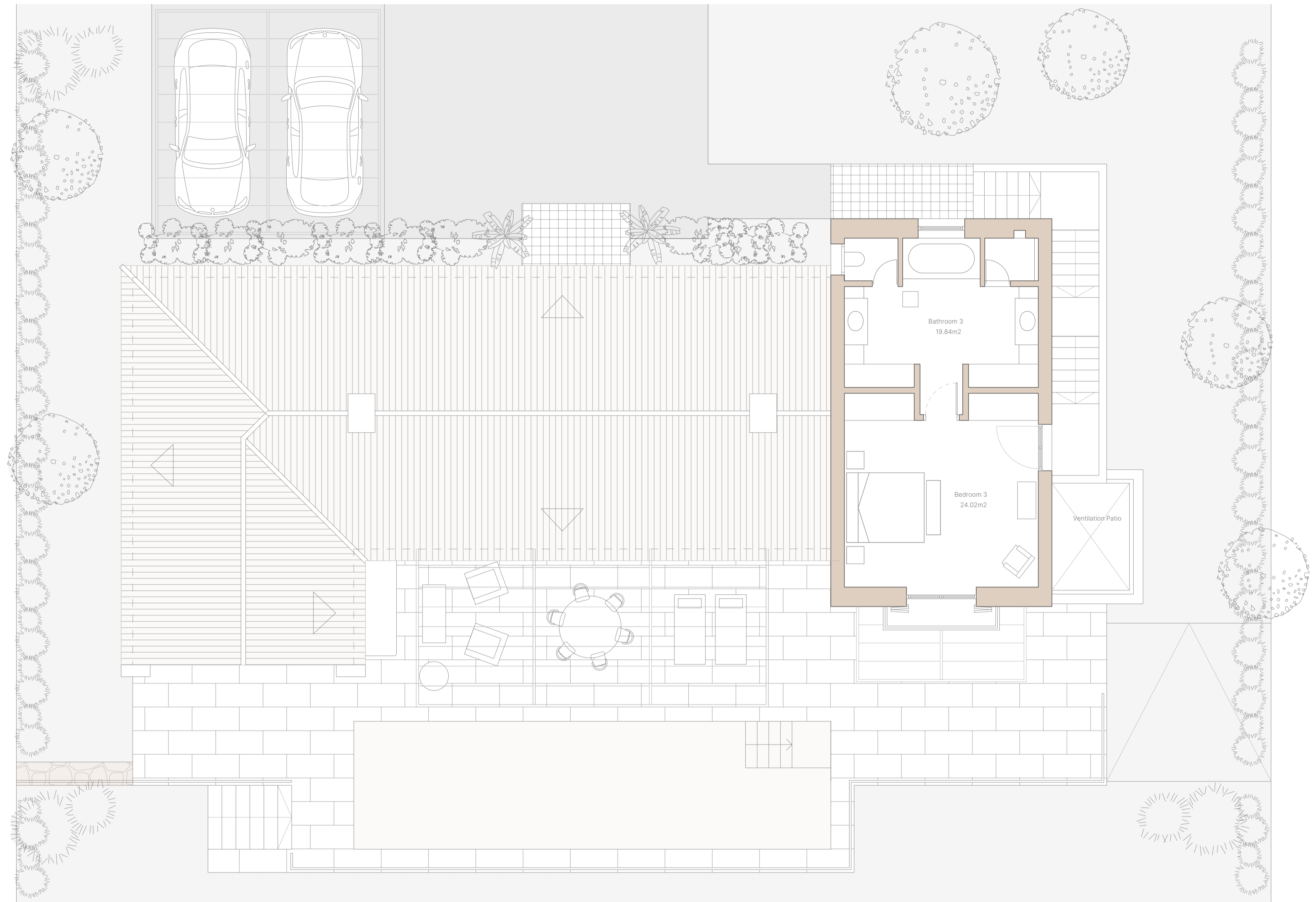
3 BEDROOMS - 3,5 BATHROOMS

FIRST FLOOR AREA	57.00 m <sup>2</sup>
GROUND FLOOR AREA	206.50 m <sup>2</sup>
BASEMENT FLOOR AREA	78.50 m <sup>2</sup>
<b>TOTAL AREA</b>	<b>342.00 m<sup>2</sup></b>
TERRACE	116.60 m <sup>2</sup>
POOL + GARDEN AREA:	548.82 - 1,036.43 m <sup>2</sup>
PLOT AREA	871.93 - 1,359.54 m <sup>2</sup>

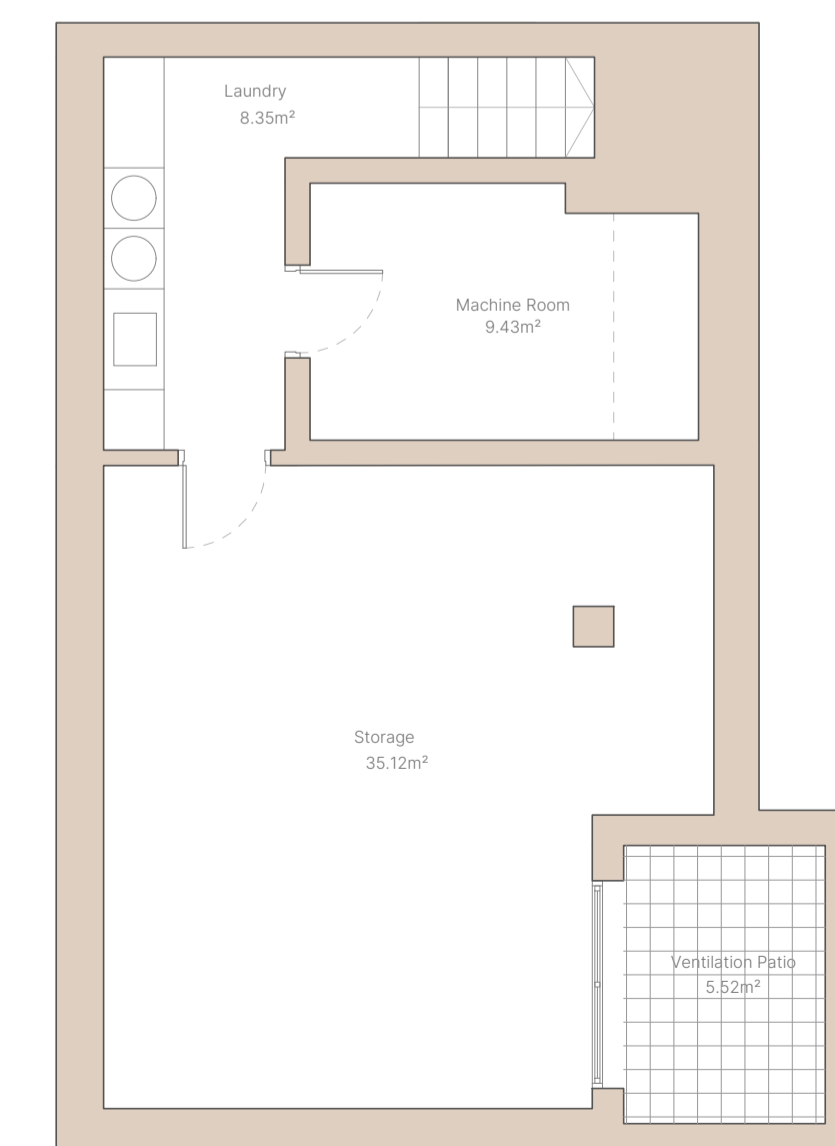
2 PARKING SPACES AND STORAGE ROOM



PROYECTO SINGLE HOME  
TORRAS Y SIERRA ARQUITECTOS



PLANTA ALTA  
FIRST FLOOR



SÓTANO  
BASEMENT