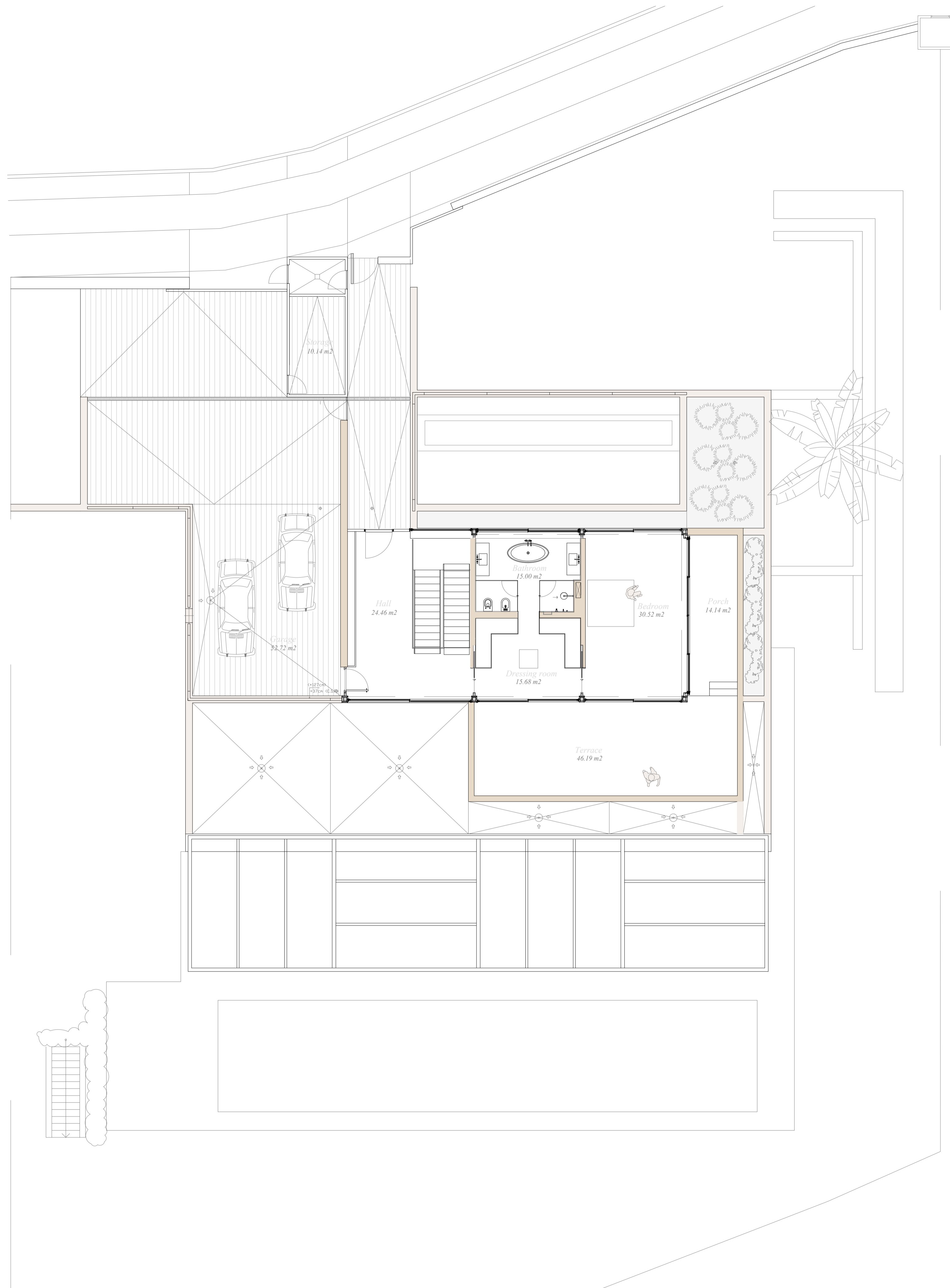


# FINCA CORTESIN

## Golfside - Villa 3

Vicens & Ramos arquitectos



### LEYENDA-LEGEND

#### PLANTA ENTRADA-ENTRY LEVEL

Planta Entrada	.....112,74 m <sup>2</sup>
Entry Level	.....1.213 ft <sup>2</sup>
Porches terrazas	.....60,33 m <sup>2</sup>
Porches terraces	.....649 ft <sup>2</sup>
Exterior pavimentado	.....184,59 m <sup>2</sup>
Paved external areas	.....201 ft <sup>2</sup>
Total/Total	....562,17 m <sup>2</sup> /6.051 ft <sup>2</sup>
Porches terrazas/Porches terraces	....216,93 m <sup>2</sup> /2.335 ft <sup>2</sup>
Patio/Patio	....68,97 m <sup>2</sup> / 742 ft <sup>2</sup>
Parcela/Plot Area	....1.937 m <sup>2</sup> /20.849 ft <sup>2</sup>

4 Dormitorios/4 Bedroom  
 4,5 Baños/4,5 Bathroom

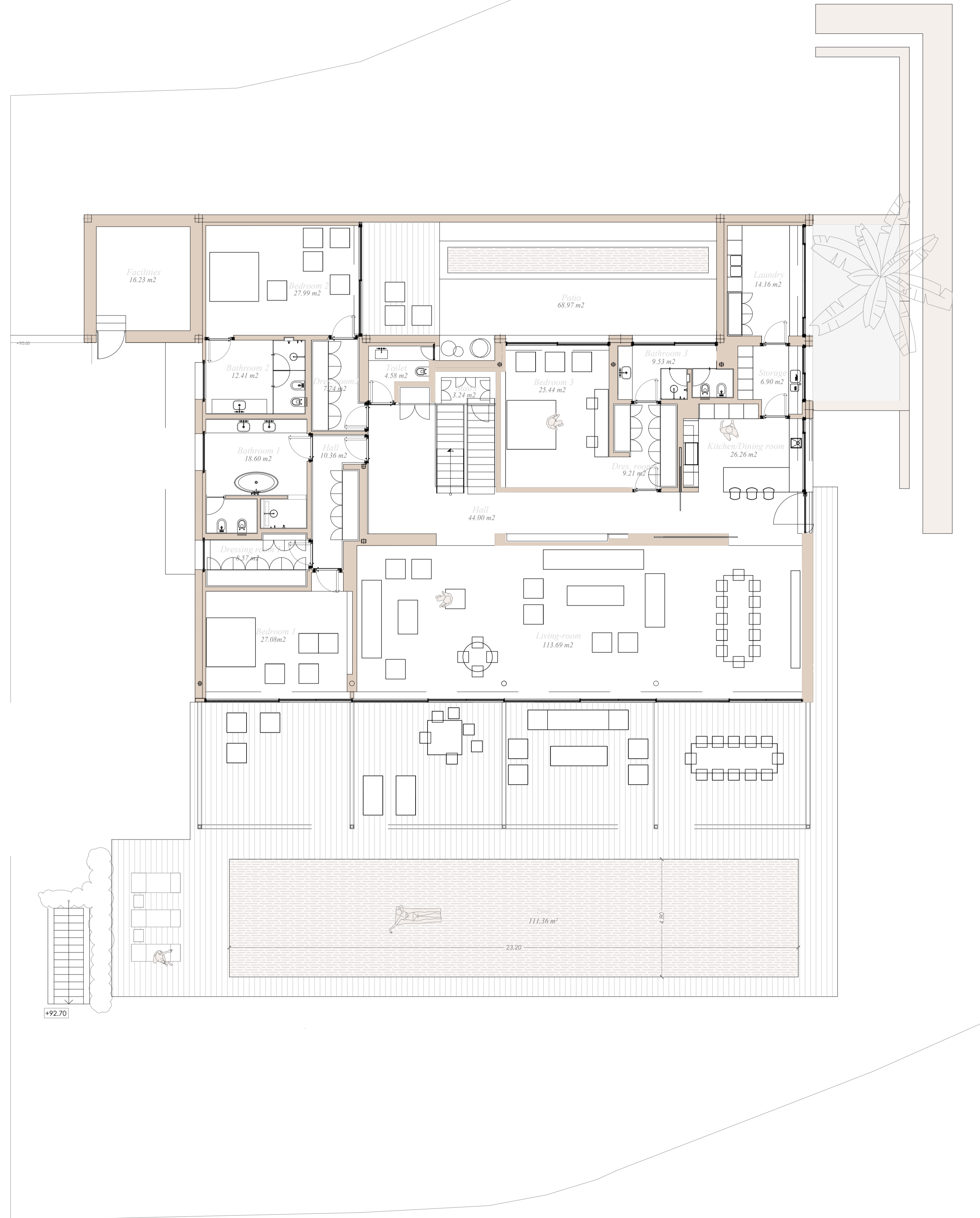


e 1/100

# FINCA CORTESIN

## Golfside - Villa 3

Vicens & Ramos arquitectos



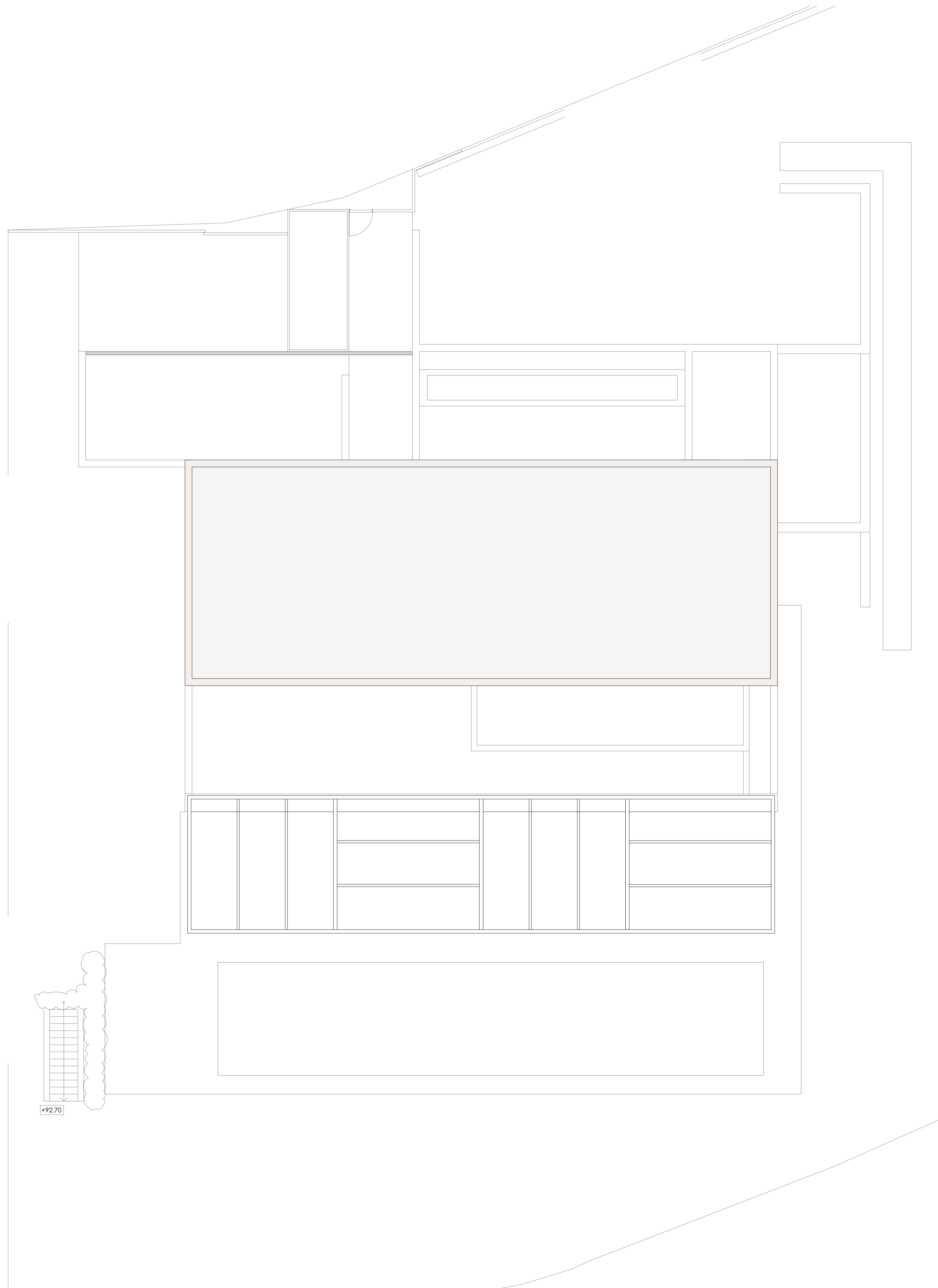
### LEYENDA-LEGEND

Planta Jardín	.....449.43 m <sup>2</sup>
Garden Level	.....4.837 ft <sup>2</sup>
Porches terrazas	.....156,60 m <sup>2</sup>
Porches terraces	.....1.685 ft <sup>2</sup>
Patio	.....68,97 m <sup>2</sup>
Patio	.....742 ft <sup>2</sup>
<b>Total/Total</b>	<b>.....562,17 m<sup>2</sup>/6.051 ft<sup>2</sup></b>
Porches terrazas/Porches terraces	.....216,93 m <sup>2</sup> /2.335 ft <sup>2</sup>
Patio/Patio	.....68,97 m <sup>2</sup> / 742 ft <sup>2</sup>
Parcela/Plot Area	.....1.937 m <sup>2</sup> /20.849 ft <sup>2</sup>

4 Dormitorios/4 Bedroom  
 4,5 Baños/4,5 Bathroom



e 1/100



# FINCA CORTESIN

## Golfside - Villa 3

Vicens & Ramos arquitectos

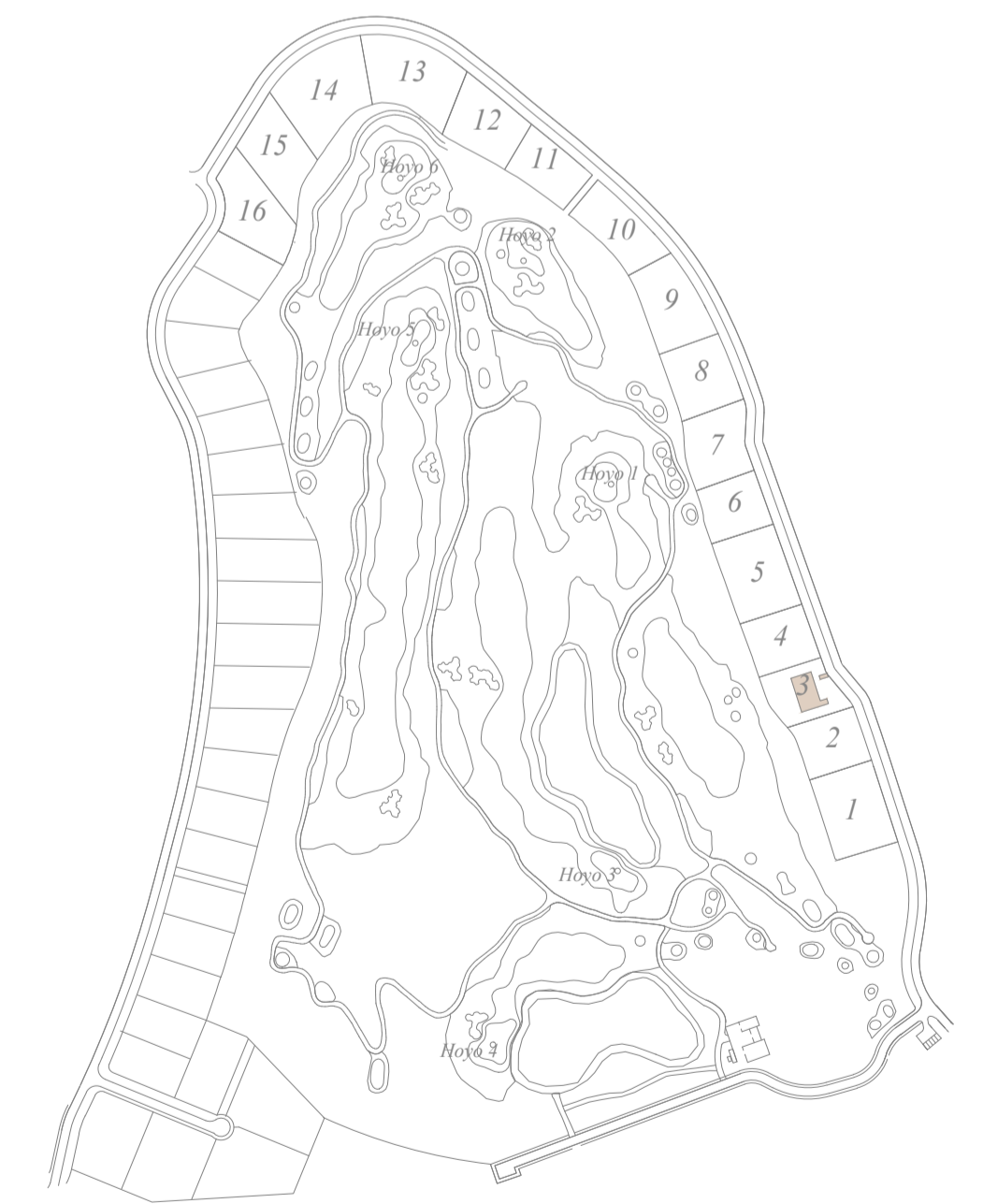


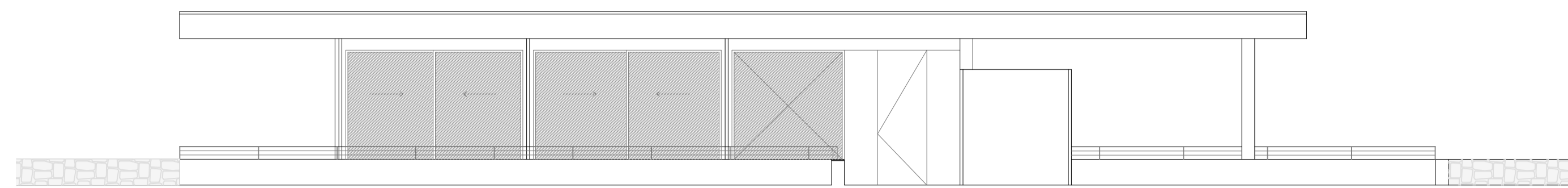
### LEYENDA-LEGEND

#### IMPLANTACIÓN- GENERAL LAYOUT

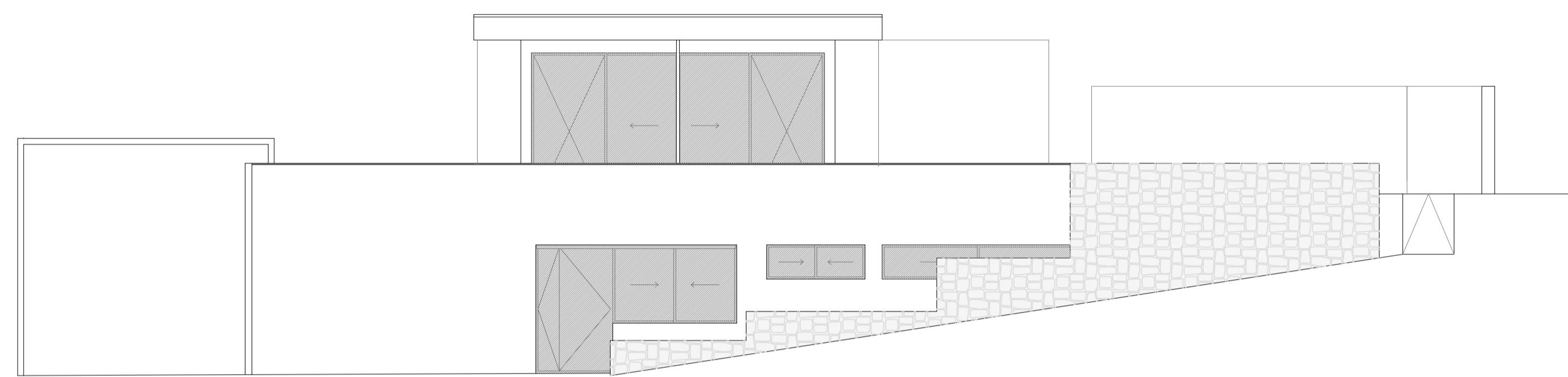
Total/Total	....562,17 m <sup>2</sup> /6.051 ft <sup>2</sup>
Porches terrazas/Porches terraces	...216,93 m <sup>2</sup> /2.335 ft <sup>2</sup>
Patio/Patio	....68,97 m <sup>2</sup> / 742 ft <sup>2</sup>
Parcela/Plot Area	....1.937 m <sup>2</sup> /20.849 ft <sup>2</sup>

4 Dormitorios/4 Bedroom  
4,5 Baños/4,5 Bathroom

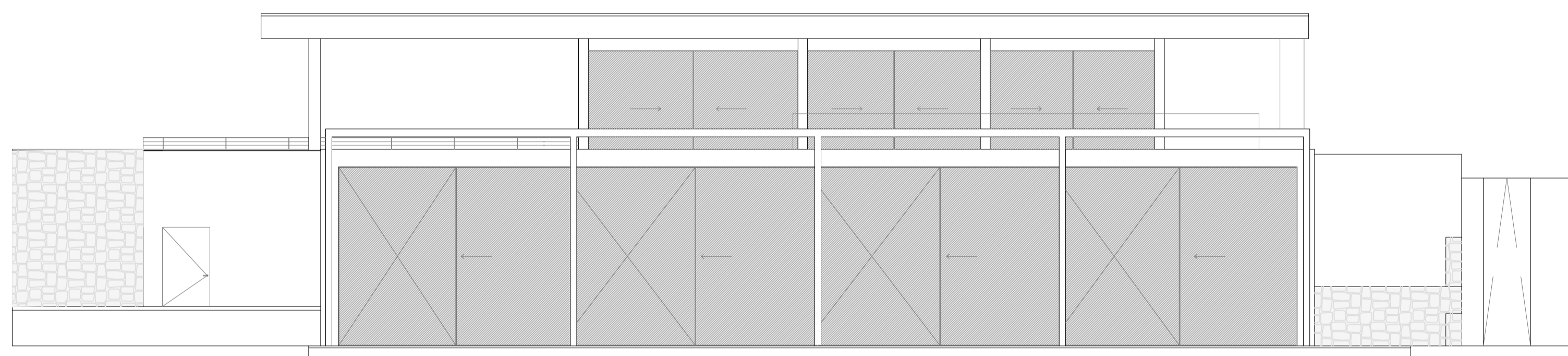




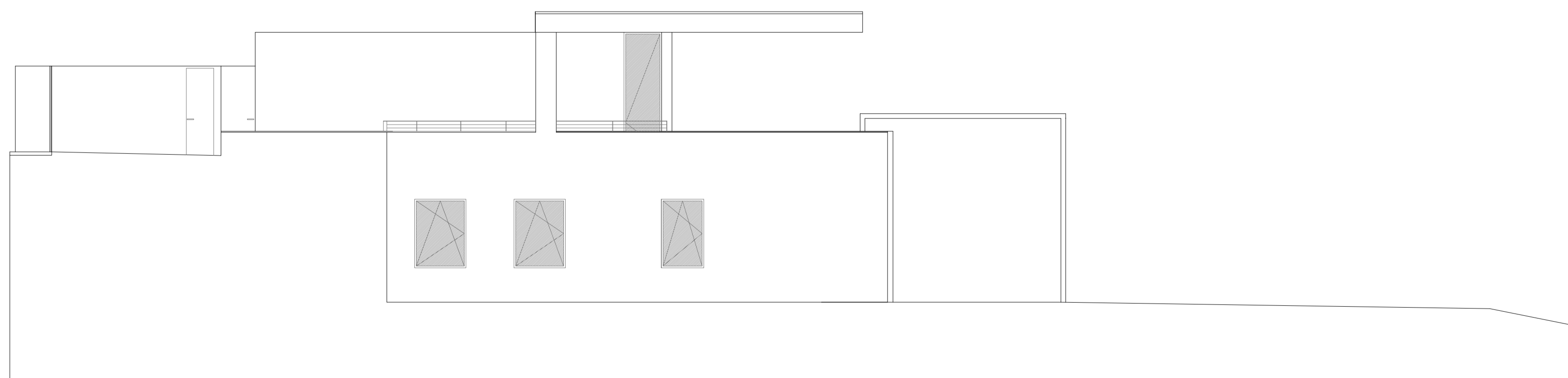
*Alzado Este/East Elevation*



*Alzado Sur/South Elevation*



*Alzado Oeste/West Elevation*



*Alzado Norte/North Elevation*

FINCA  
CORTESIN

*Golfside - Villa 3*

*Vicens & Ramos arquitectos*



Promueve SERTINIVAL SPAIN, SL CIF: B-86.768.025  
C/Pradillo 5, bajo exterior, 28002 Madrid - Registro Mercantil de Madrid, tomo 31.124, folio 168, sección 8ª Hoja M-560.14



e 1/100



Estos planos no tienen valor contractual y podrán experimentar variaciones por exigencias técnicas, legales, administrativas o a iniciativa del arquitecto director de las obras sin que ello implique menoscabo del nivel de calidades. Todo el mobiliario y ajardinamiento es meramente decorativo.