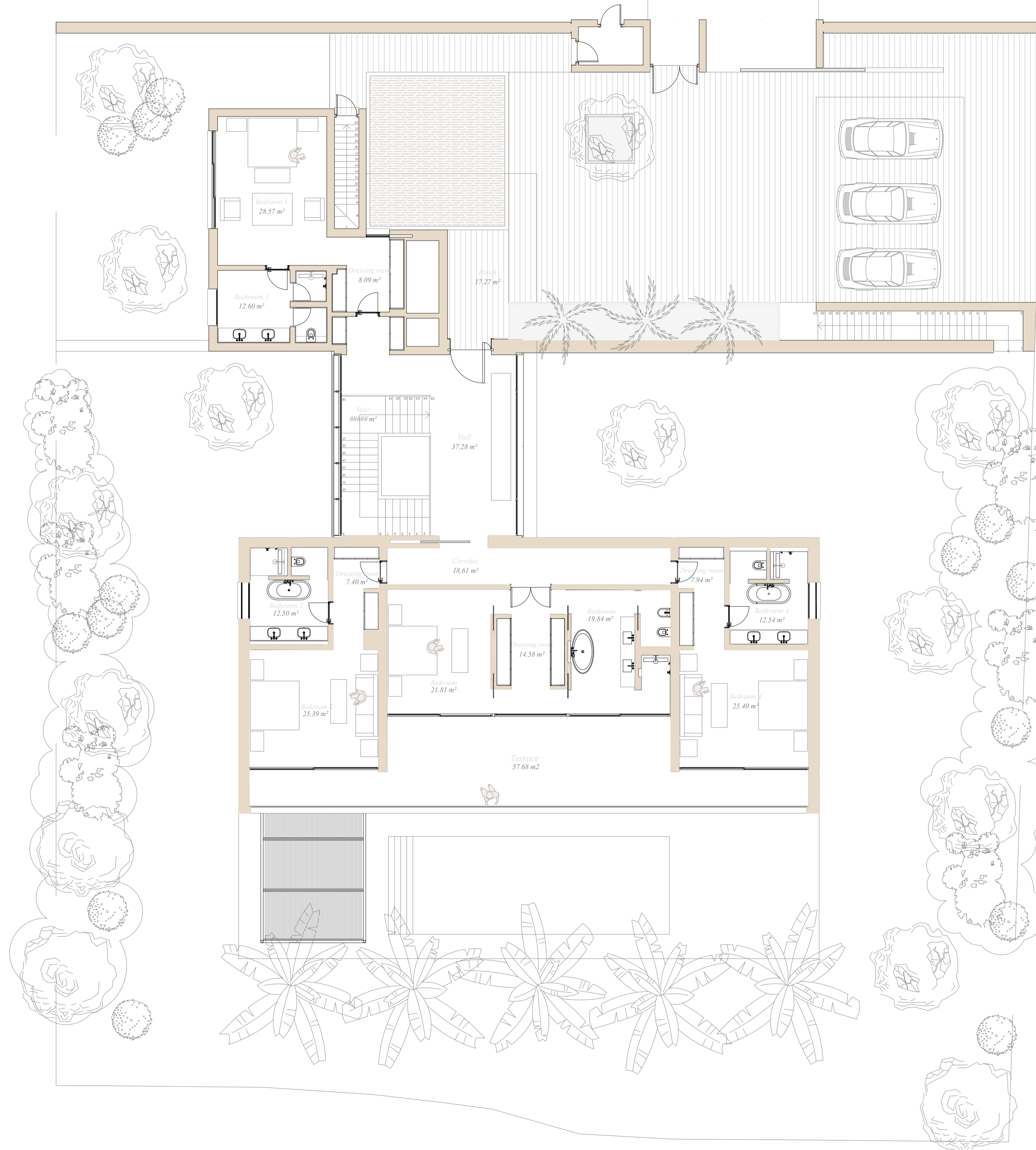


# FINCA CORTESIN

## Golfside - Villa 6

Miguel Olazábal arquitecto



### LEYENDA-LEGEND

#### PLANTA ENTRADA-ENTRY LEVEL

Planta Entrada	.....394,96 m <sup>2</sup>
Entry Level	.....4.251 ft <sup>2</sup>
Porches terrazas	.....93,52 m <sup>2</sup>
Porches terraces	.....1.006 ft <sup>2</sup>
Exterior pavimentado	.....64,40 m <sup>2</sup>
Paved external areas	.....693 ft <sup>2</sup>
Total/Total	....739,37 m <sup>2</sup> /7.958 ft <sup>2</sup>
Porches terrazas/Porches terraces	....168,47 m <sup>2</sup> /1.813 ft <sup>2</sup>
Parcela/Plot Area	...1.888 m <sup>2</sup> /20.322 ft <sup>2</sup>

5 Dormitorios/5 Bedroom  
 6,5 Baños/6,5 Bathroom



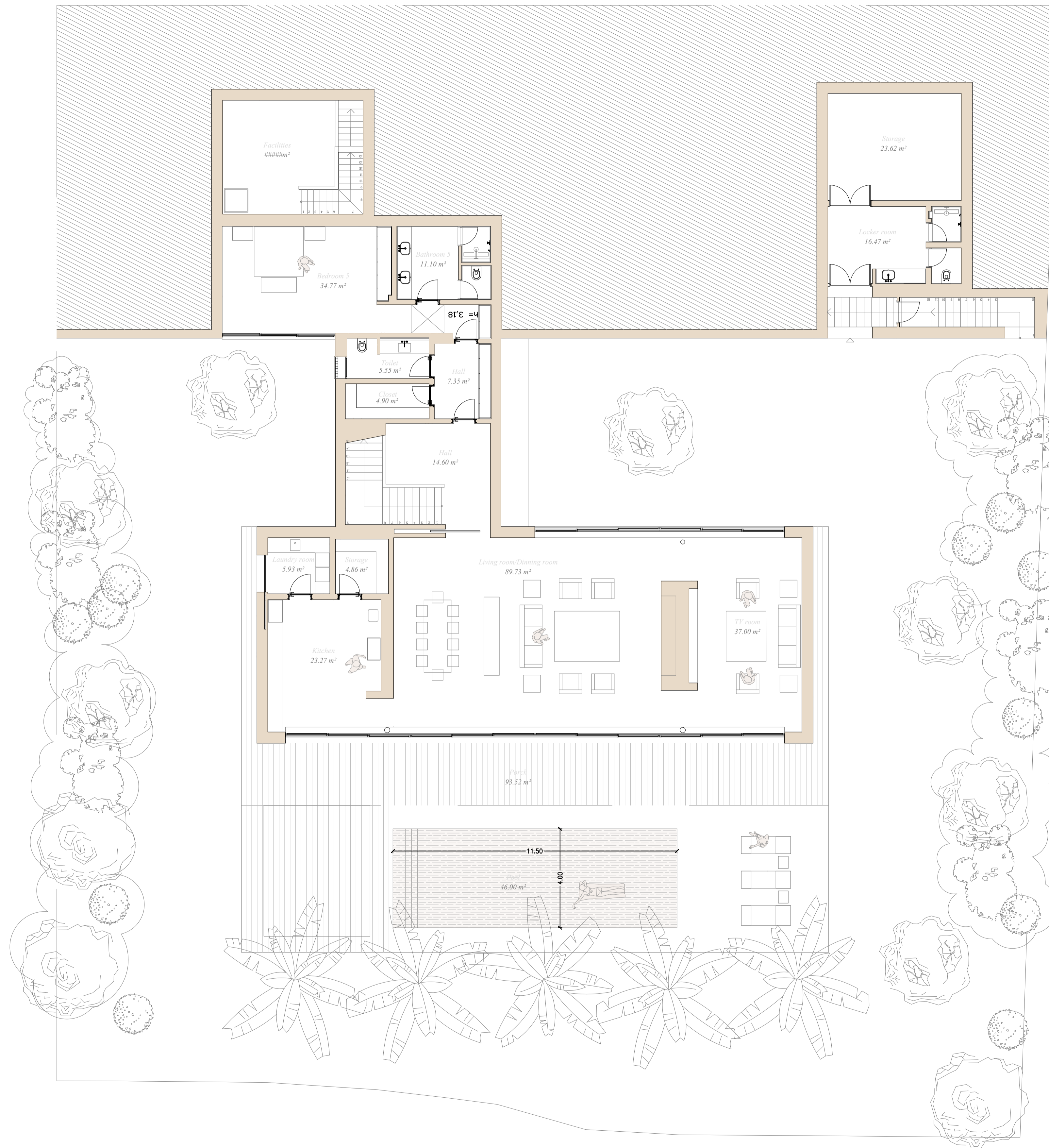
e 1/100



# FINCA CORTESIN

## Golfside - Villa 6

Miguel Olazábal arquitecto



### LEYENDA-LEGEND

PLANTA JARDÍN-GARDEN LEVEL	
Planta Jardín	.....344,41 m <sup>2</sup>
Garden Level	.....3.707 ft <sup>2</sup>
Porches terrazas	.....74,95 m <sup>2</sup>
Porches terraces	.....806 ft <sup>2</sup>
Total/Total	....739,37 m <sup>2</sup> /7.958 ft <sup>2</sup>
Porches terrazas/Porches terraces	....168,47 m <sup>2</sup> /1.813 ft <sup>2</sup>
Parcela/Plot Area	...1.888 m <sup>2</sup> /20.322 ft <sup>2</sup>

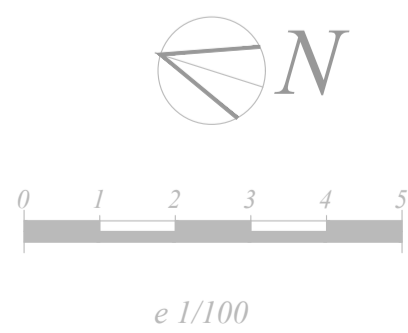
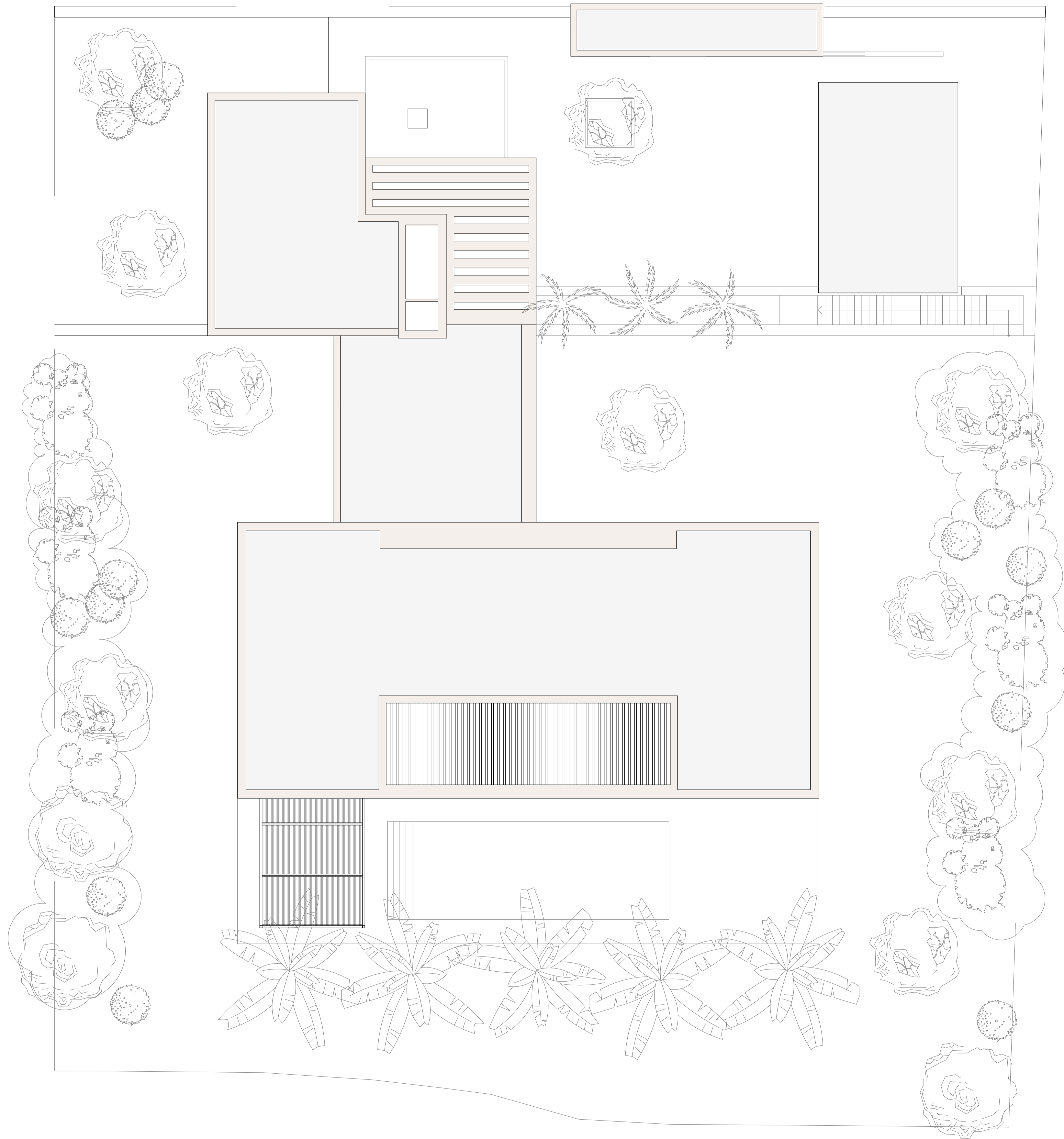
5 Dormitorios/5 Bedroom

6,5 Baños/6,5 Bathroom



e 1/100





# FINCA CORTESIN

## Golfside - Villa 6

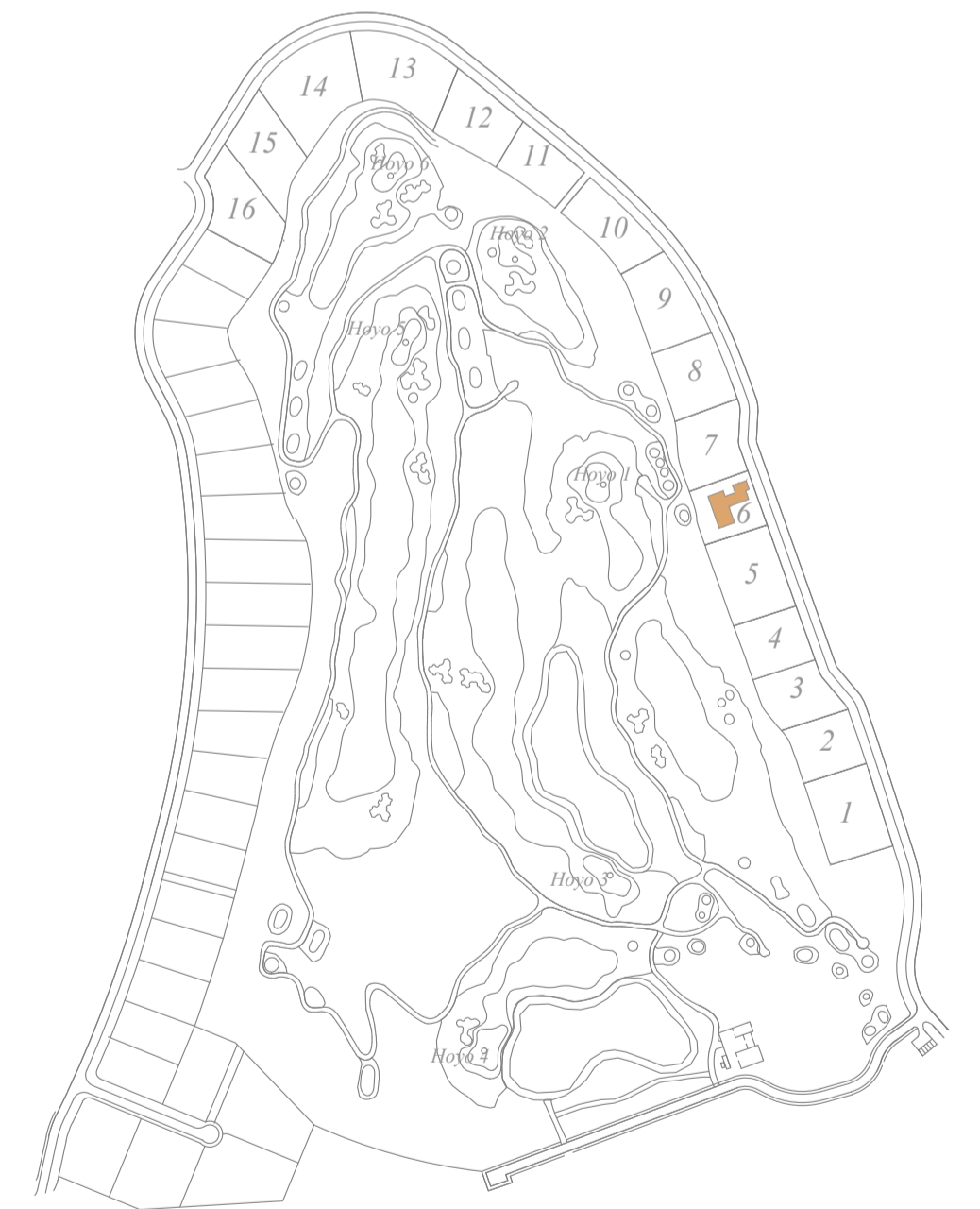
Miguel Olazábal arquitecto



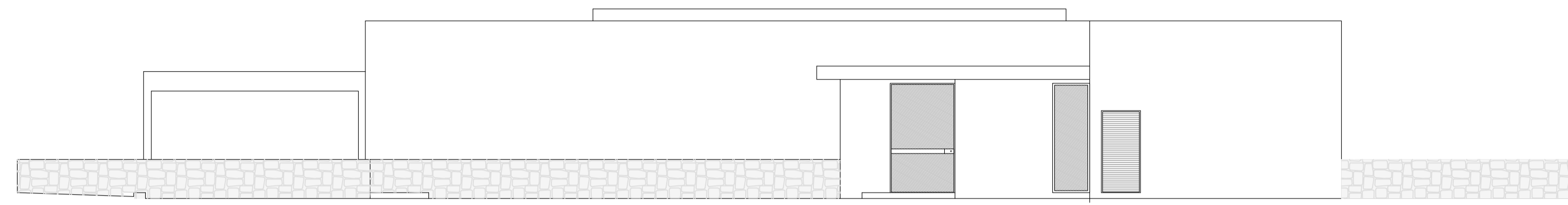
### LEYENDA-LEGEND IMPLANTACIÓN- GENERAL LAYOUT

Total/Total	....739,37 m <sup>2</sup> /7.958 ft <sup>2</sup>
Porches terrazas/Porches terraces	....168,47 m <sup>2</sup> /1.813 ft <sup>2</sup>
Parcela/Plot Area	....1.888 m <sup>2</sup> /20.322 ft <sup>2</sup>

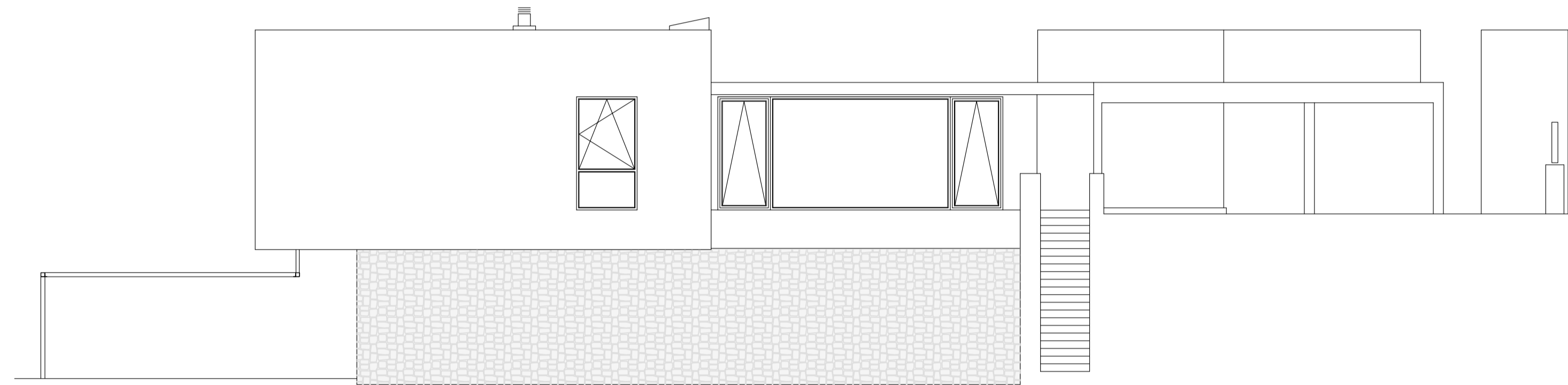
5 Dormitorios/5 Bedroom  
 6,5 Baños/6,5 Bathroom



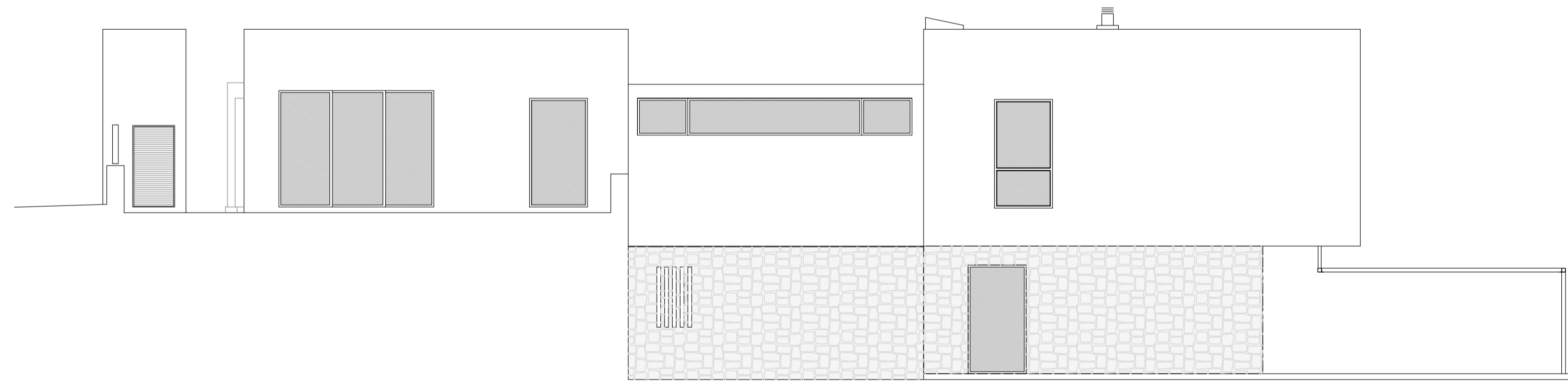




*Alzado Noreste/ Northeast Elevation*



*Alzado Noroeste/ Northwest Elevation*



*Alzado Suroeste/ Southwest Elevation*



*Alzado Sureste/ Southeast Elevation*



e 1/100